



CARRIERES DU HAINAUT

BELGIAN BLUESTONE BREATHES AUTHENTICITY IN A DÜSSELDORF HOME

ADRIAN PIENTKA

'No bright colours or design experiments.' 'It should be spacious with a timeless vibe.' 'A stylish yet authentic atmosphere for our family to live in' ...

When Adrian Pientka (PNTK GmbH) was asked to thoroughly renovate a single-family home in Düsseldorf, Germany, he quickly knew that it was to become one of his favorite projects yet. An **authentic design**, after all, calls for a harmonious combination of **natural materials**.



www.pntk.de



Blue Stone of Hainaut - EnoPasso®



WOOD + BELGIAN BLUESTONE

Pientka and his team clad the house in Düsseldorf almost entirely with a combination of **natural wood** and **Blue Limestone** from Hainaut.



"For us, there is no comparison to the effect natural materials can achieve in a home. Artificial alternatives, like ceramic stone or laminate flooring, simply do not exude the warmth and sense of luxury our client was after."

Adrian Pientka (PNTK GmbH)

The parquet flooring, steel elements and bluestone tiles were selected simultaneously to guarantee a harmonious match.



A VERSATILE MATERIAL

A long-time fan of bluestone, Pientka is particularly fond of the flexibility Belgian Bluestone brings to the table, in terms of applications as well as aesthetics. For one, Blue Limestone from Hainaut is suitable for both **interior and exterior** purposes because of its excellent wear resistance. It can also have countless different looks thanks to the **many surface finishes** available. Indeed, the **versatility of the material** shows throughout Pientka's entire design, inside and out.

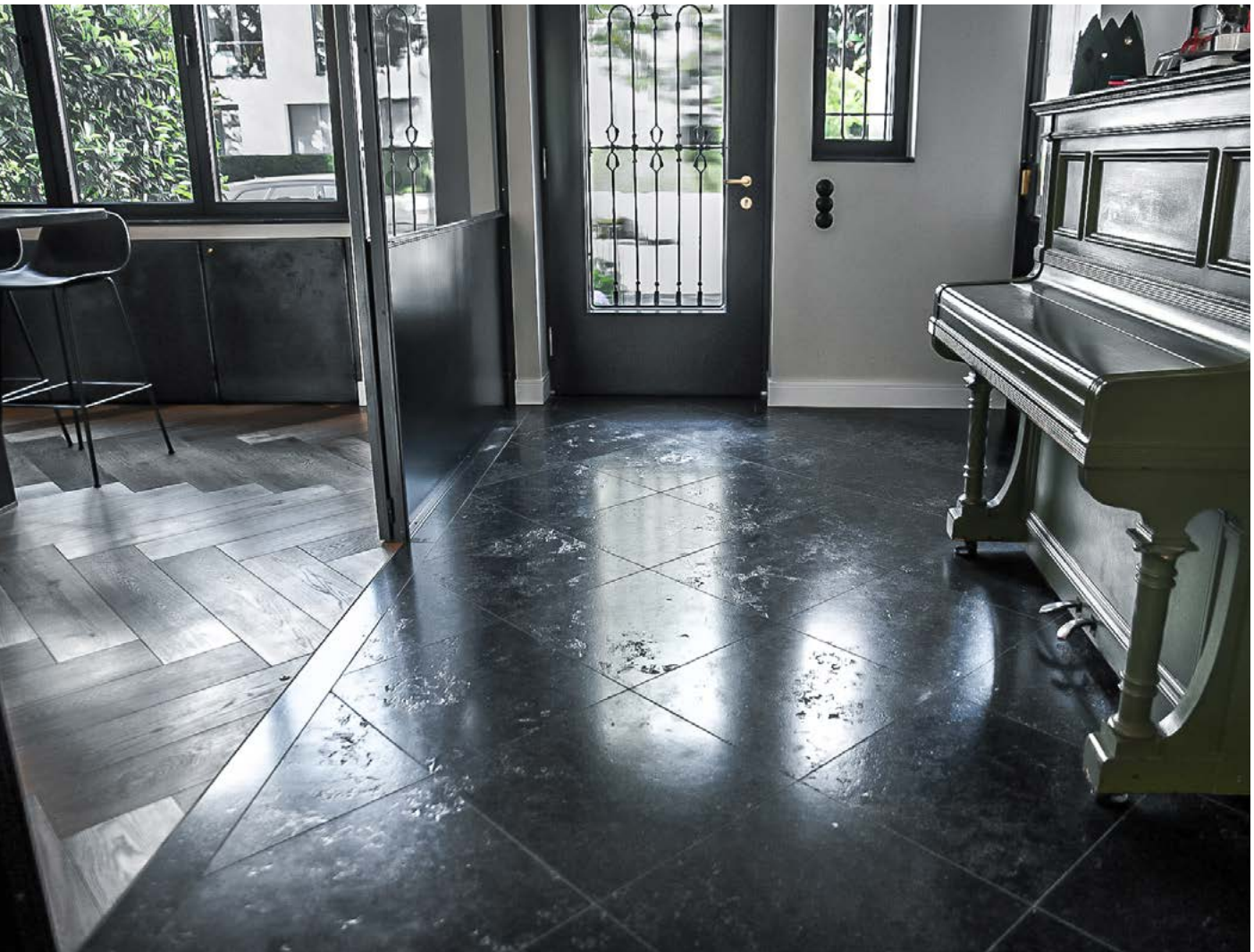
COME IN ...



While the bluestone pavers themselves are Belgian, their shape, colour and surface texture are typical of Düsseldorf, fitting in wonderfully with the overall design concept of the house. The bluestone steps have a non-slip surface.



... AND HAVE A LOOK AROUND



In the **hallway**, Pientka opted for large natural stone tiles in a diagonal pattern – a classic choice for architects building or renovating classic homes. The EnoPasso® tiles have a **satined finish**, which means they will always look stunning with only little maintenance involved. The dark colour was carefully chosen to echo the **steel dividing panel** between the hallway and the living room.



BOLD STATEMENT IN THE KITCHEN



In the kitchen, the bluestone worktop with its matching backsplash steals the show. Pientka considers it a statement of his love for natural stone: "We underlined the authenticity of the material by making the worktop **twenty centimeters thick**. The result may look simple – as it is supposed to – but is in fact a bold combination of computer calculations and excellent handcraftsmanship."



HEAVY LIFTING IN THE BATHROOM

Determined to integrate a 600-kilo bluestone washstand in one of the home's multiple bathrooms, Pientka had to think outside the box, as the stairs would not be able to withstand such a load. The roof was opened up and a crane did the heavy lifting. Problem solved.



But designing the bathroom was not without challenges either. Pientka was considering all natural stone fronts at first, but concluded that the **anthracite colours** of the bluestone would overpower the room. "To avoid an overly masculine effect," he explains, "we decided to add some soft, natural wood elements. It goes to show that sometimes less is more."





In the **shower**, the stone designer purposely opted for blue limestone in a **herringbone** pattern. The bathroom floors, after all, have a classic diagonal pattern similar to that in the hallway. Adding another diagonal format would have been too mainstream for this kind of project, in which authenticity is key.



THE PATIO DILEMMA



Finally, step onto the minimalist **patio** where blue limestone tiles reign supreme. This was perhaps the toughest design feat of all, as natural stone tends to change in appearance due to weather conditions. Pientka: "Clearly, we did not want to use any natural stone other than **bluestone**, to continue the common thread in our design. Fortunately, we were able to find a surface finish that will not be quick to change and, when it eventually does, will discreetly fade into the overall composition."

"Blue Limestone from Hainaut is easy to maintain and perfectly able to withstand the outdoors. In every sense of the word, it was the natural choice for us."

Adrian Pientka (PNTK GmbH)





CARRIERES DU HAINAUT

Rue de Cognebeau, 245
B-7060 Soignies
Belgium

T: + 32 (0)67 34 78 00

E: info@carreresduhainaut.com
architecte@carreresduhainaut.com

W: www.carreresduhainaut.com

 [/CarrieresduHainaut](https://www.facebook.com/CarrieresduHainaut)

 [/carreresduhainaut](https://www.instagram.com/carreresduhainaut)

 [/CarrDuHainaut](https://twitter.com/CarrDuHainaut)

 [/CarrDuHainaut](https://www.pinterest.com/CarrDuHainaut)